



**FOR IMMEDIATE RELEASE**

Thursday October 06, 2022

**Media Contacts:**

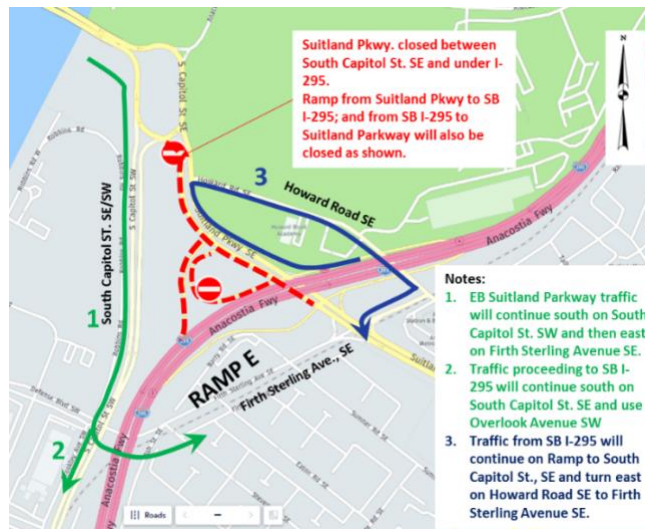
**German Vigil** – (202) 306-1668, german.vigil@dc.gov

**Mariam Nabizad** – (202) 359-2678, mariam.nabizad@dc.gov

**Temporary Closures of Suitland Parkway and the intersection of Howard Road SE with Firth Sterling Avenue SE  
October 10 through October 17, 2022**

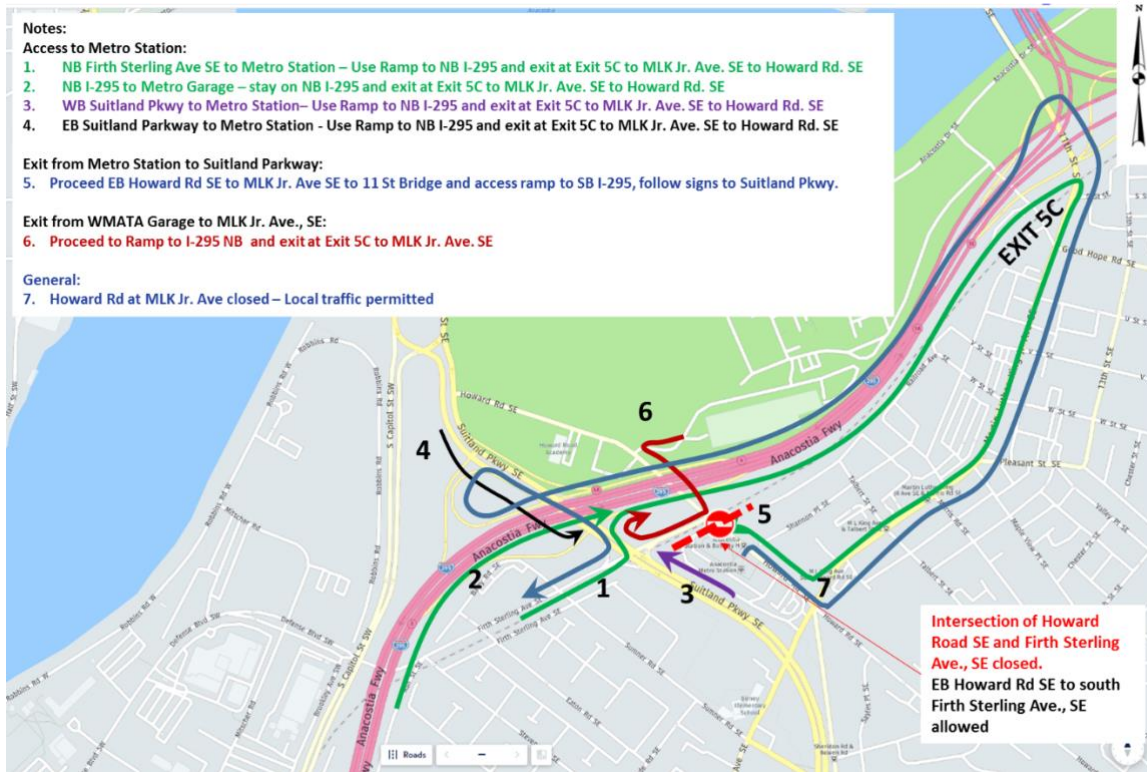
(Washington, DC) - The District Department of Transportation (DDOT) will temporarily close eastbound Suitland Parkway from South Capitol Street SE to under I-295 nightly from 9.00 p.m. to 5.00 a.m. next morning between October 10 and 17, 2022. Marked detours will be in place during this closure. *On days and nights during events at Nationals Park and/or Audi Field, NO lane closures from two hours before the start of the event to two hours after the end of the event.*

**EB Suitland Parkway Closure and Detour**



The intersection of Howard Road SE and Firth Sterling Avenue SE will be closed starting Friday night, October 14 at 9:00 p.m., extending through Monday morning, October 17 at 5:00 a.m. Right turn access from eastbound Howard Road SE to southbound Firth Sterling Avenue SE will be maintained. All sidewalks will remain open during the intersection closure. When the intersection is closed, all lanes will remain open on Suitland Parkway and South Capitol Street (between Firth Sterling Avenue SE and Suitland Parkway). Marked detours will be in place during this closure.

### Howard Road SE/Firth Sterling Avenue SE Intersection Closure and Detour



If any of these events are cancelled, lane closures will occur during the typical times. Additionally, any nighttime full roadway closures that are prohibited on these event days will take place in the event of an event cancellation.

These closures are necessary for construction activities associated with the South Capitol Street Corridor Project which includes construction of the New Frederick Douglass Memorial Bridge and the reconstruction of the I-295/Suitland Parkway interchange.

Please observe the posted speed limit and proceed through the construction area with caution. Pedestrians and cyclists are advised to stay alert and follow signage when traveling through this area.

For more information about the Frederick Douglass Memorial Bridge Project and to stay up-to-date on traffic related impacts and construction progress, please visit [www.newfrederickdouglassbridge.com](http://www.newfrederickdouglassbridge.com).

###

The mission of the District Department of Transportation (DDOT) is to enhance the quality of life for District

residents and visitors by ensuring that people, goods, and information move efficiently and safely with minimal adverse impact on residents and the environment.

Follow us on [Twitter](#); like us on [Facebook](#) and visit the website at [www.ddot.dc.gov](http://www.ddot.dc.gov) to find out about DDOT's work across all eight wards of the District.. Visit [goDCgo.com](http://goDCgo.com) for more information on transportation options in the District.